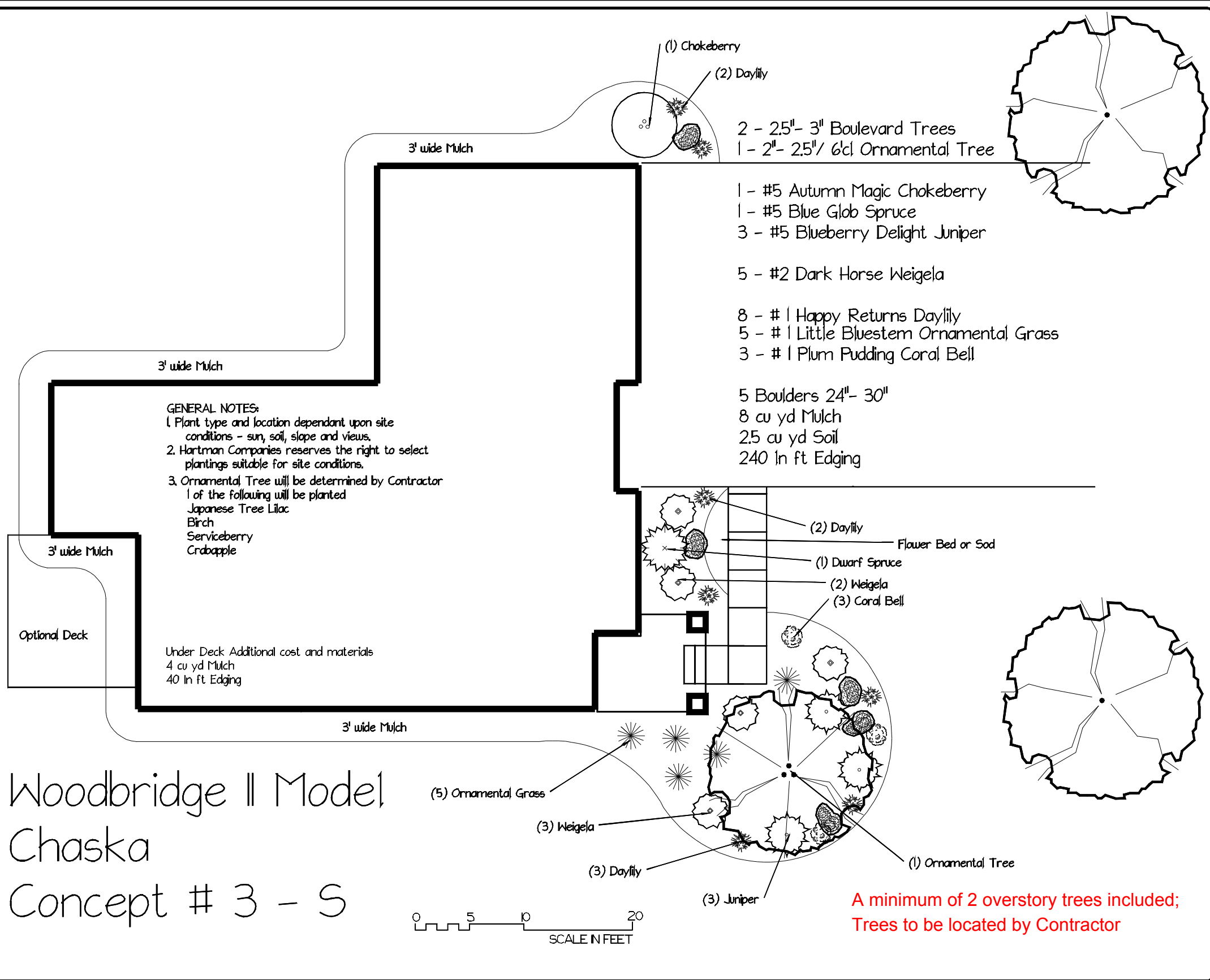


Woodbridge II Model Chaska Concept # 3 - S

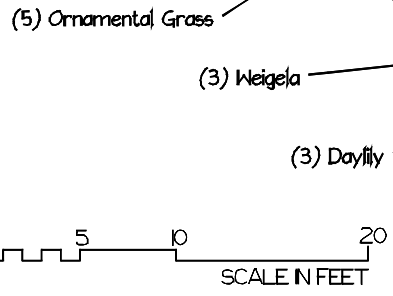


GENERAL NOTES:
 1. Plant type and location dependant upon site conditions - sun, soil, slope and views.
 2. Hartman Companies reserves the right to select plantings suitable for site conditions.
 3. Ornamental Tree will be determined by Contractor
 1 of the following will be planted
 Japanese Tree Lilac
 Birch
 Serviceberry
 Crabapple

- 2 - 25''- 3'' Boulevard Trees
- 1 - 2''- 25''/ 6'cl Ornamental Tree
- 1 - #5 Autumn Magic Chokeberry
- 1 - #5 Blue Glob Spruce
- 3 - #5 Blueberry Delight Juniper
- 5 - #2 Dark Horse Weigela
- 8 - #1 Happy Returns Daylily
- 5 - #1 Little Bluestem Ornamental Grass
- 3 - #1 Plum Pudding Coral Bell

- 5 Boulders 24''- 30''
- 8 cu yd Mulch
- 2.5 cu yd Soil
- 240 In ft Edging

- (2) Daylily
- (1) Dwarf Spruce
- (2) Weigela
- (3) Coral Bell



**A minimum of 2 overstory trees included;
Trees to be located by Contractor**

NOTES

No.	Date	Description

HARTMAN COMPANIES
 8099 Bavaria Road
 Victoria, MN

ROBERT THOMAS HOMES
 The Harvest Development
 Chaska, Mn

Woodbridge II Model
 Chaska
 Concept # 3 - S

SCALE: 1/4" = 1'
 DRAWN BY: HJV Designer
 CHECKED BY:
 DATE: Feb 2005
 DATE OF PRINT:

PROJECT NO.
 SHEET NO.